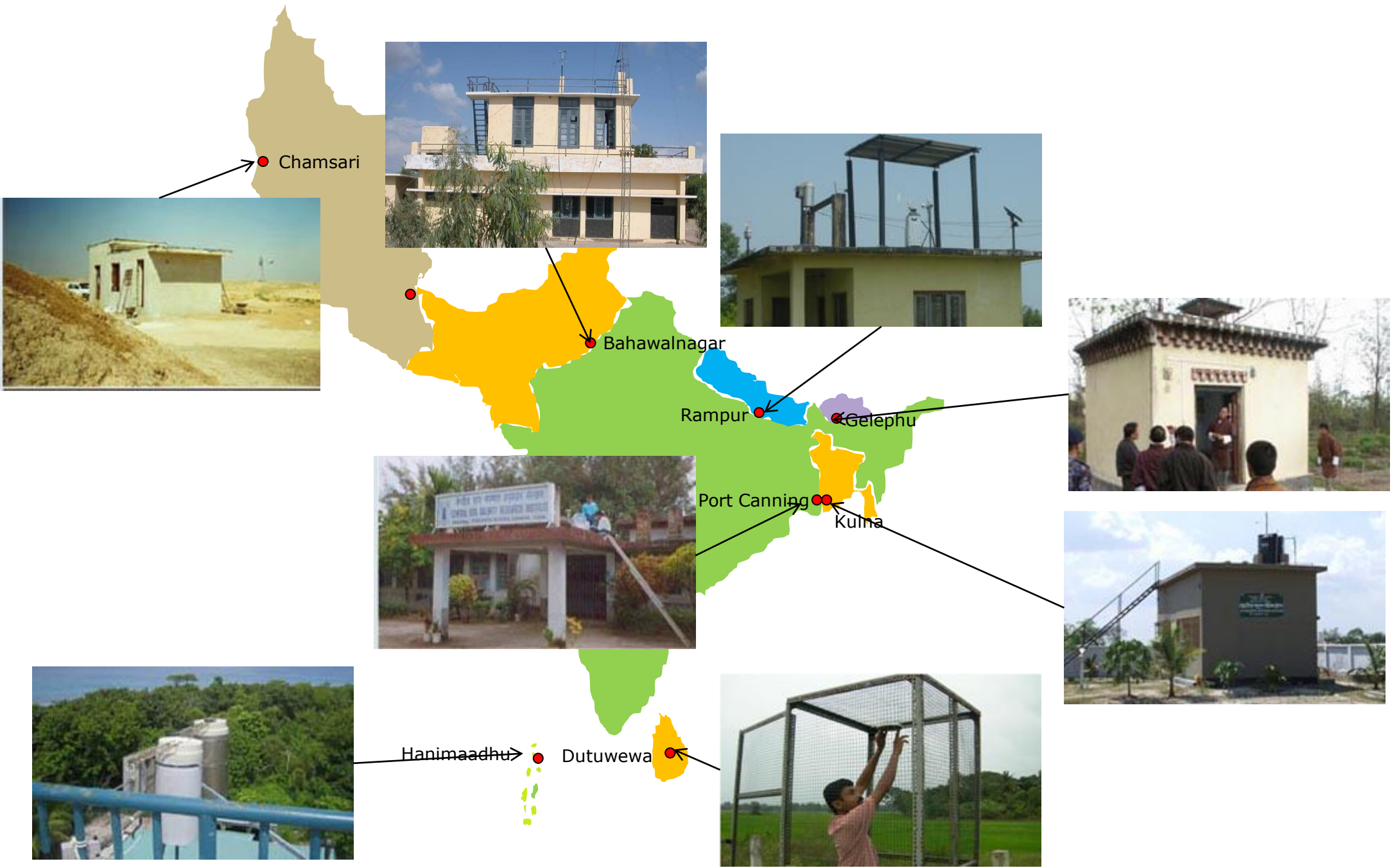


Data analysis report from passive samplers

Martin Ferm 2010-11-18



Where do we expose the samplers?



Nepal

Rampur

Station 1

Bhutan 2

Gelephu

NEC Office roof top

Sarpang Dzong

Slelgana, Punakha

Traffic (Thimphu)

Bhur

Bhur farm

Station 2

Sri Lanka 2

Dutuwewa

Doramadalawa

Station 3

Maldives

Hanimaadhu

Station 4

India

Port Canning

Station 5

Iran 2

Chamsari

Station 6

Bangladesh

Kulna

Station 7

Pakistan

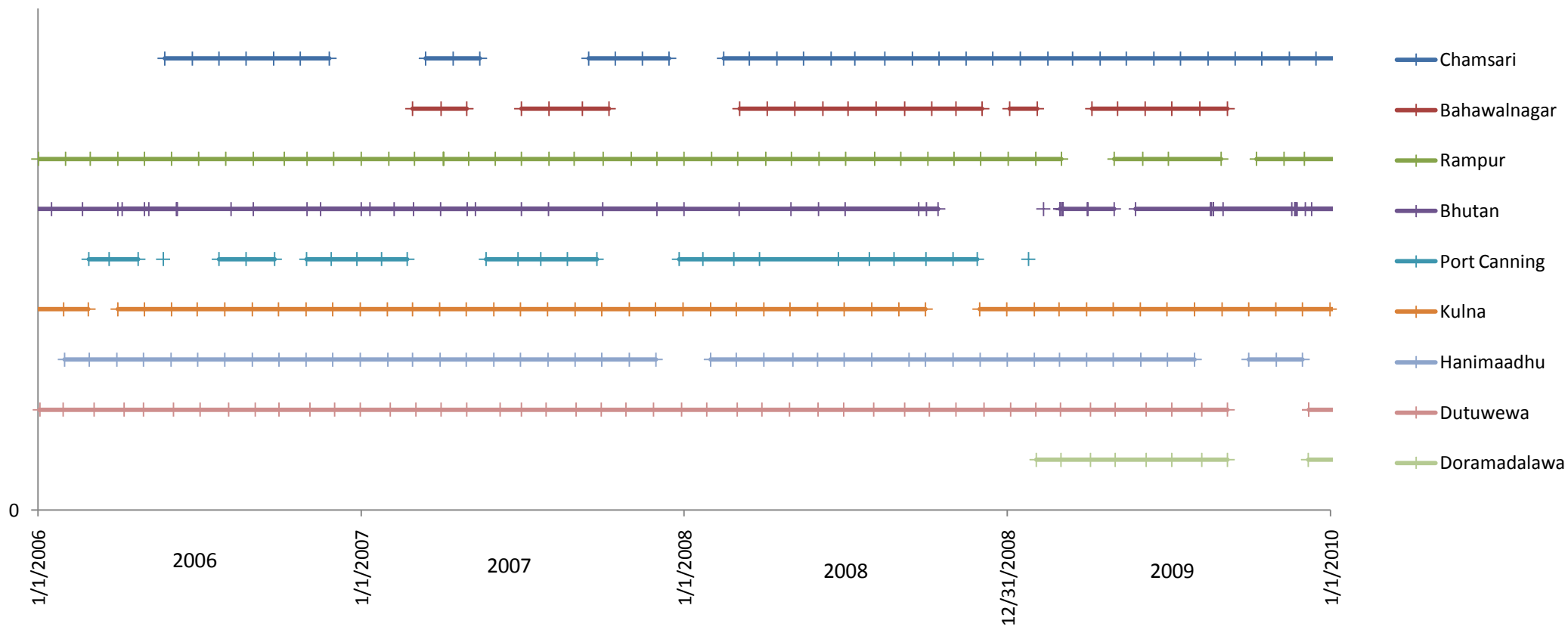
Bahawalnagar

Station 8 (Kerb site in Islamabad)

Station 8

Last sample received at IVL

Country	Station	stop date
Bangladesh	Stn7	2010-08-31
Bhutan	Bhur	2010-05-01
	Gasa (Mani)	2010-09-21
	Gelaphu	2009-11-22
	NEC Office	2010-09-20
	Sarpang Dzong	2009-11-21
	Sieigana, Punakha	2010-09-29
	Traffic (Thimphu)	2009-11-18
India	Stn5	2010-07-28
Iran	Chamsari	2010-01-15
	Stn6	2010-03-15
Maldives	Stn4	2009-11-30
Nepal	Stn1	2010-08-31
Pakistan	Stn8	2010-04-10
Sri Lanka	Stn3	2010-07-03
	Doramadalawa	2010-04-12



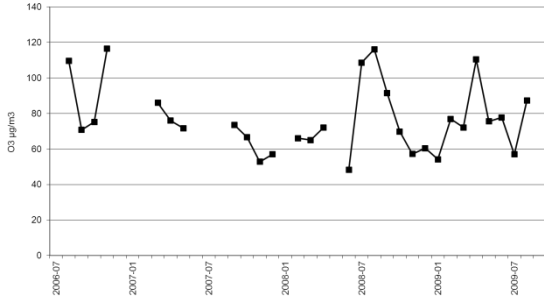
O₃ µg/m³

Pakistan

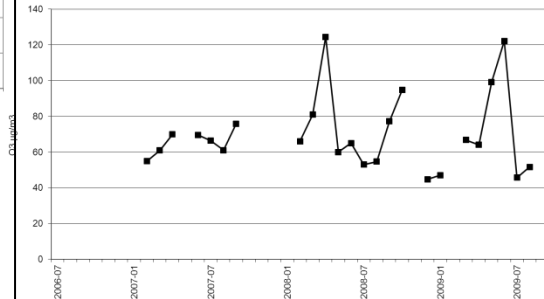
Nepal

Bhutan

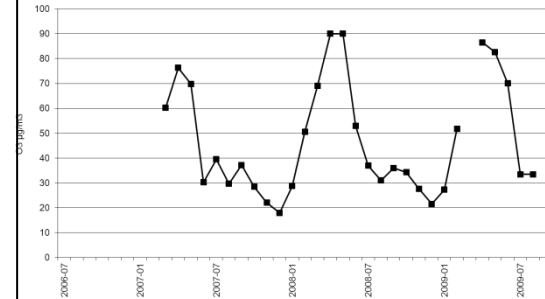
O₃, monthly means



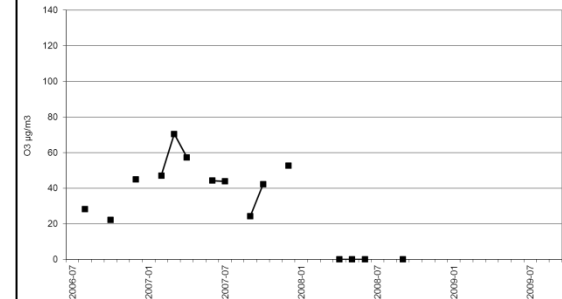
O₃, monthly means



O₃, monthly means



O₃, monthly means

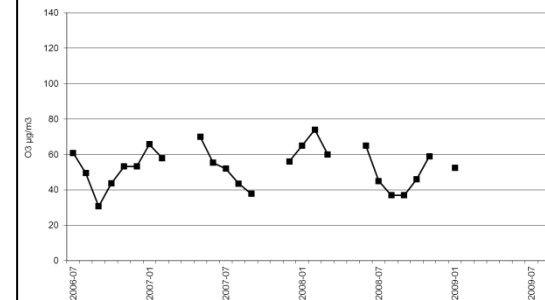


Iran

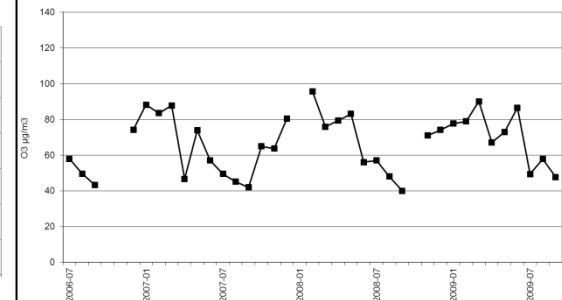
Maldives

Sri Lanka

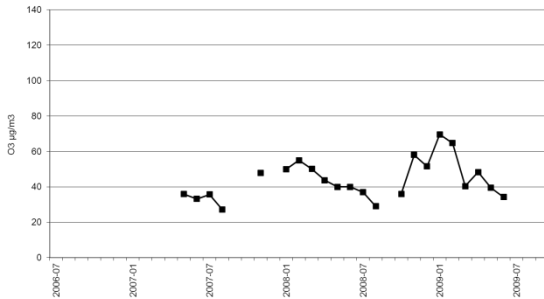
O₃, monthly means



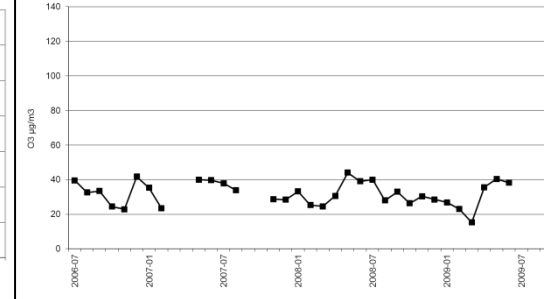
O₃, monthly means



O₃, monthly means



O₃, monthly means



India

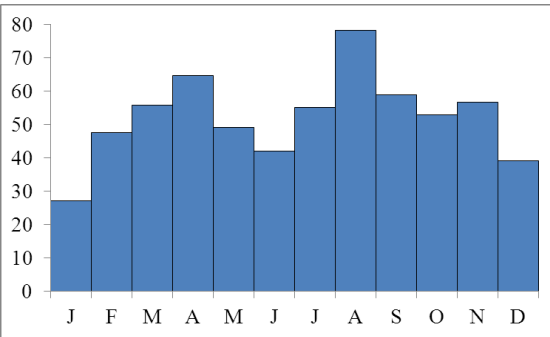
Bangladesh

O₃ µg/m³

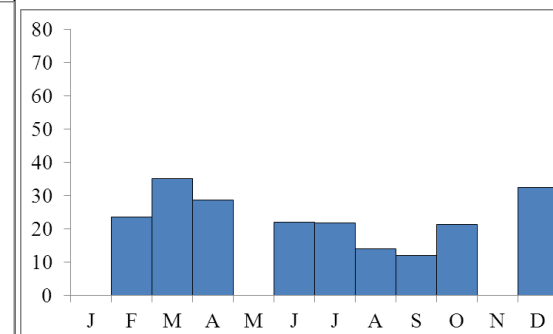
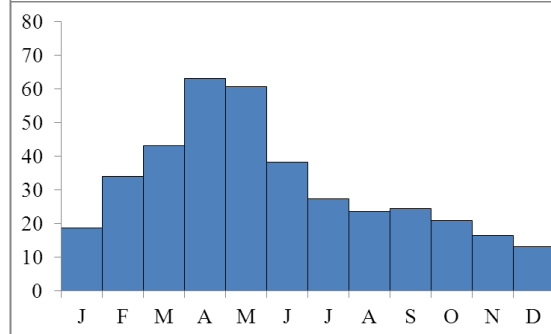
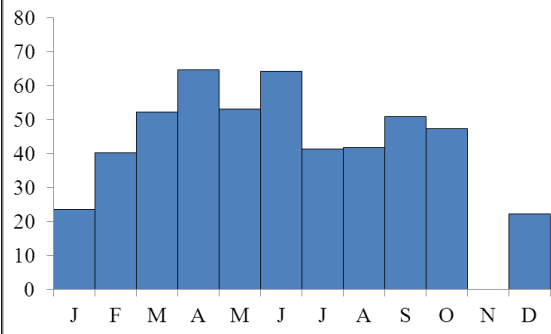
Pakistan

Nepal

Bhutan

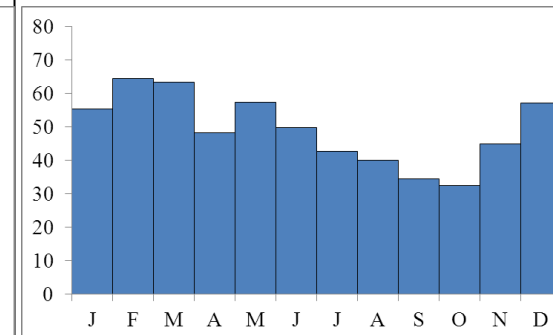
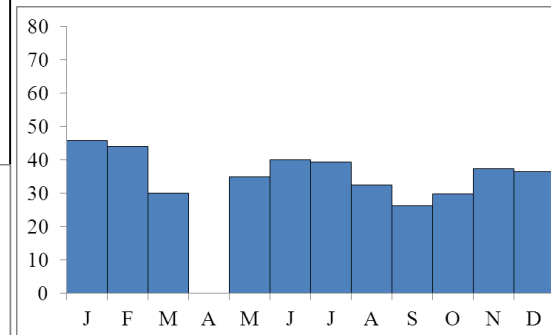
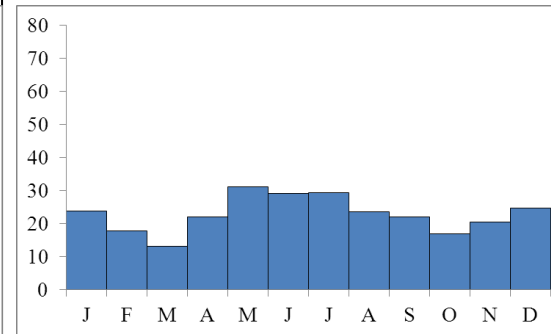
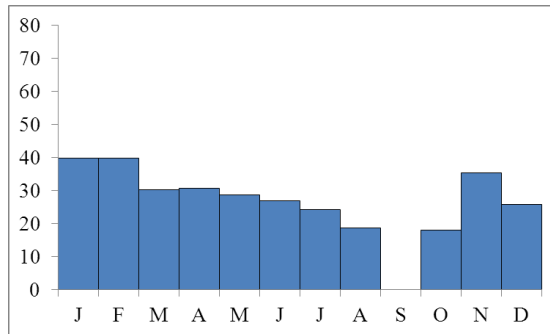


Iran



Maldives

Sri Lanka



India

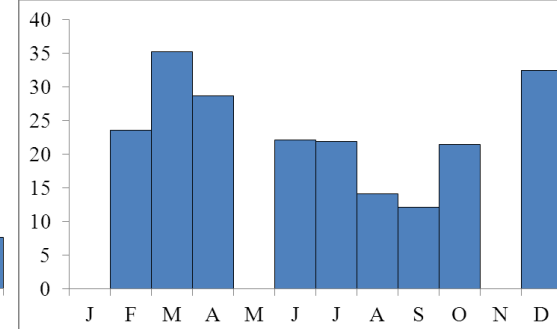
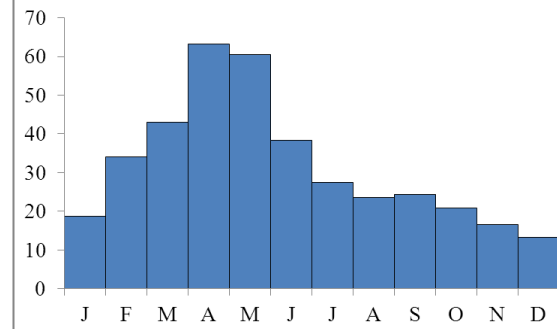
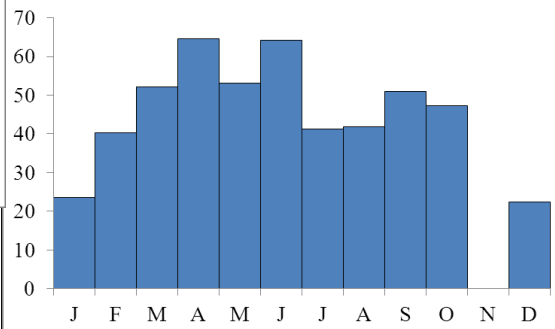
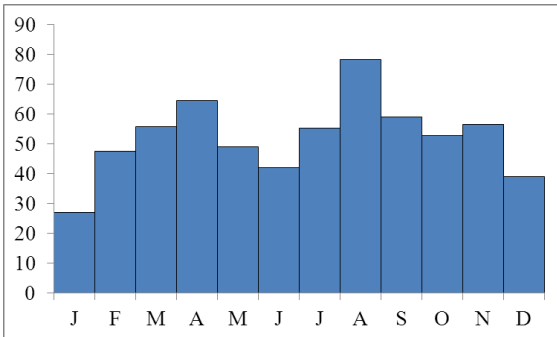
Bangladesh

O₃ µg/m³

Pakistan

Nepal

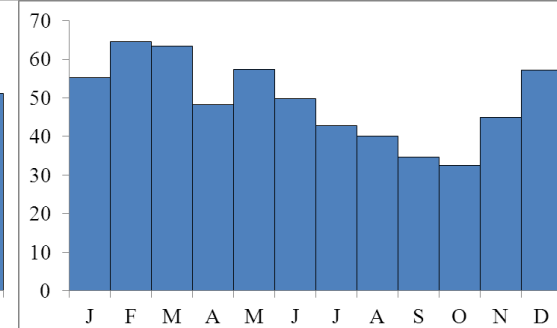
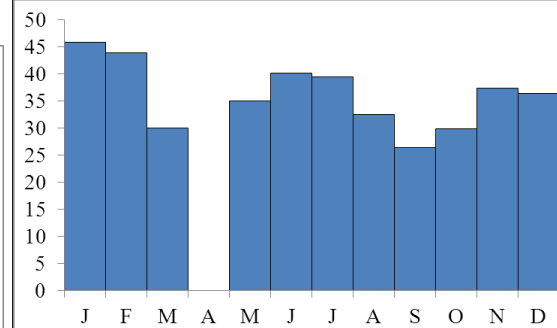
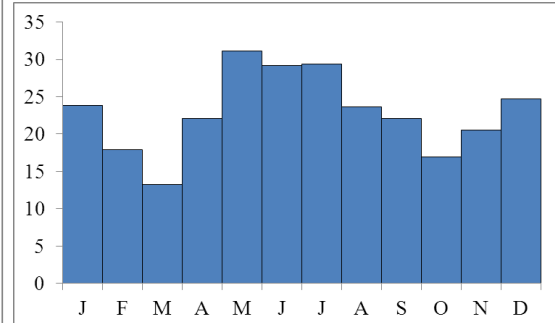
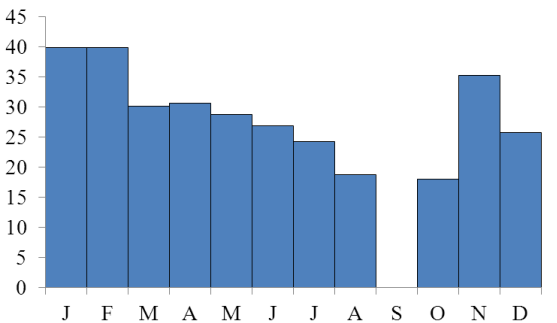
Bhutan



Iran

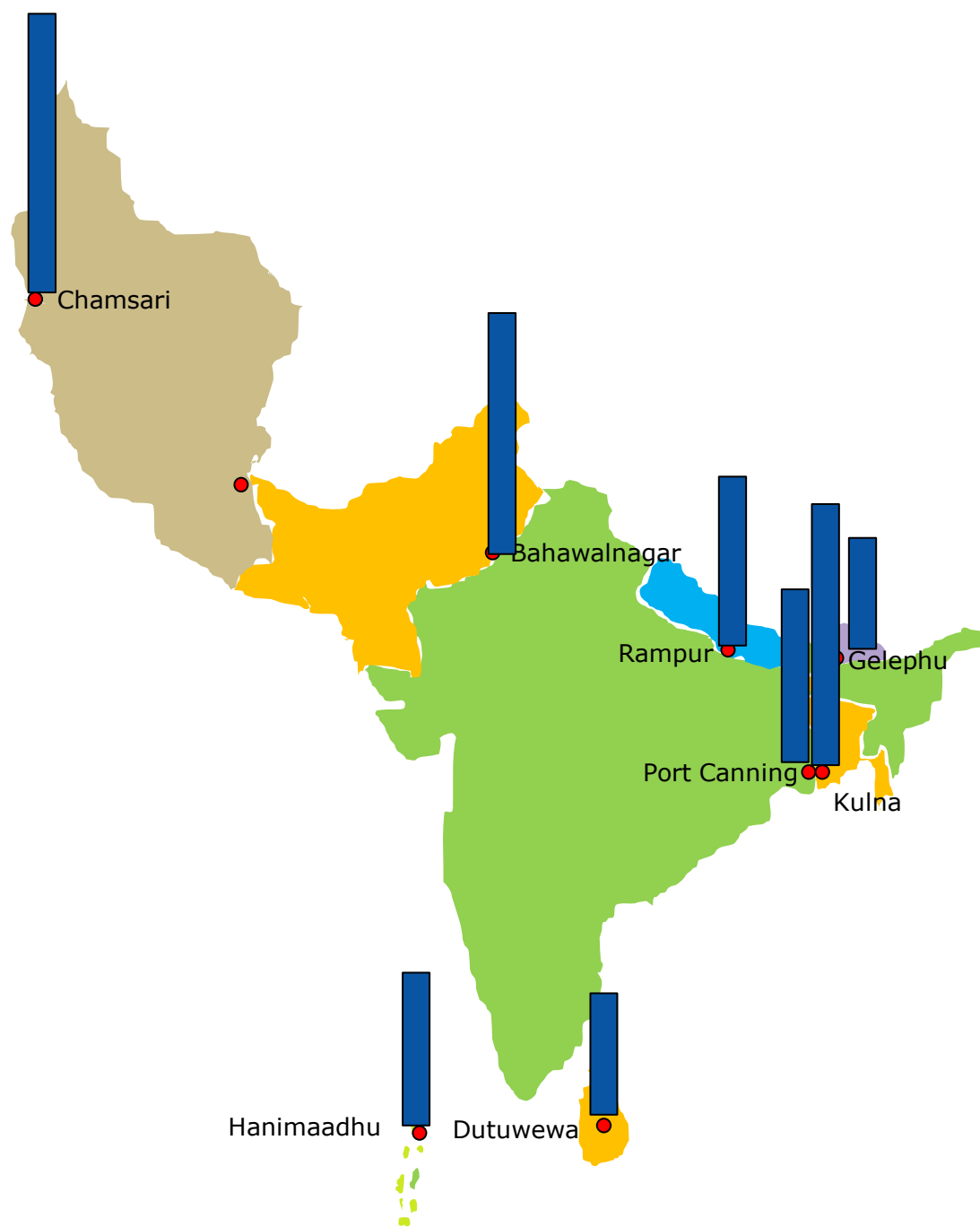
Maldives

Sri Lanka

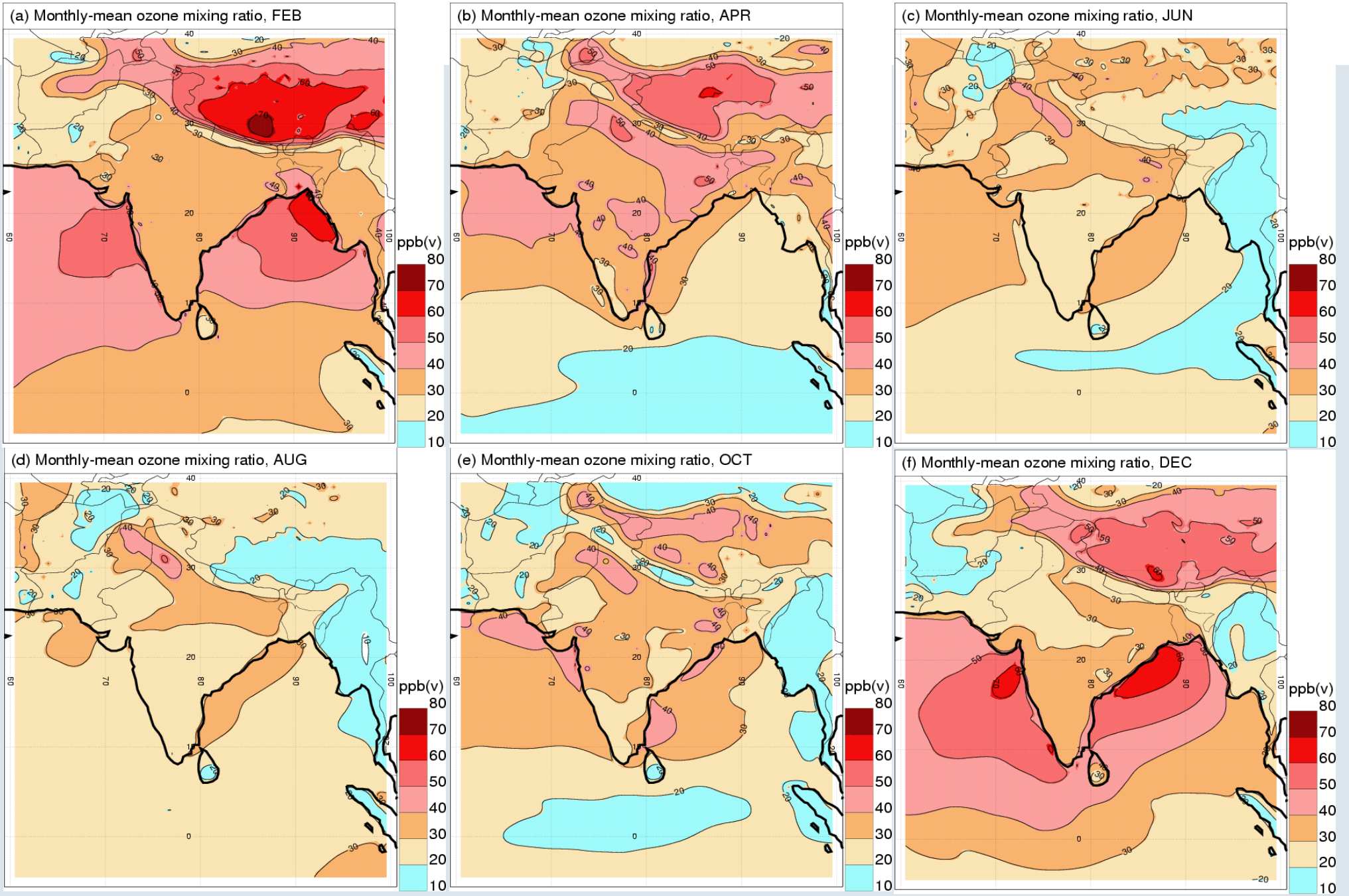


India

Bangladesh



SMHI Modelled monthly-mean (24h) near-surface O₃ concentrations across South Asia



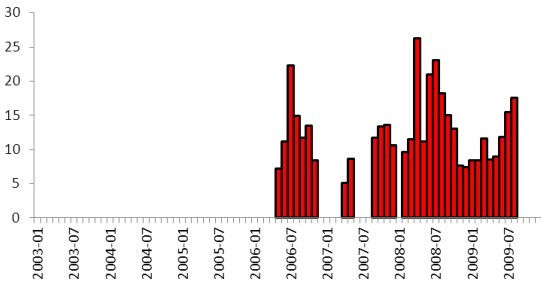
SO₂ µg/m³

Pakistan

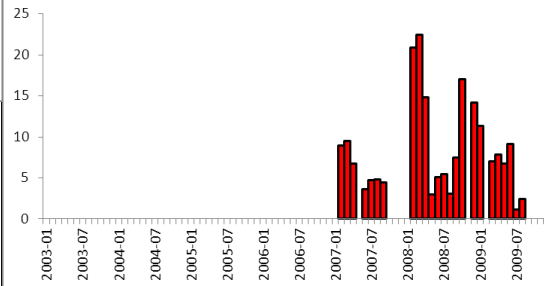
Nepal

Bhutan

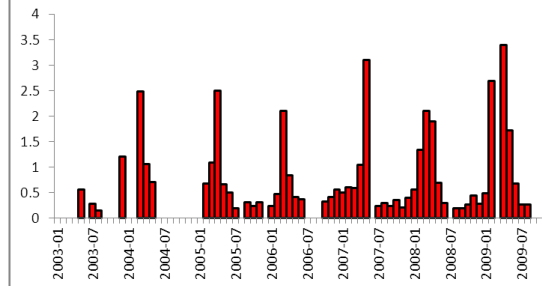
so₂



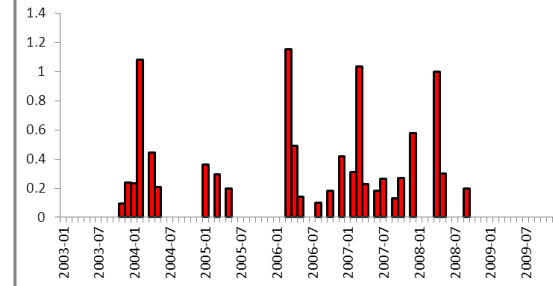
so₂



so₂



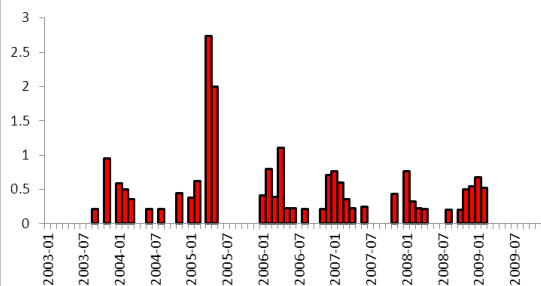
so₂



Iran

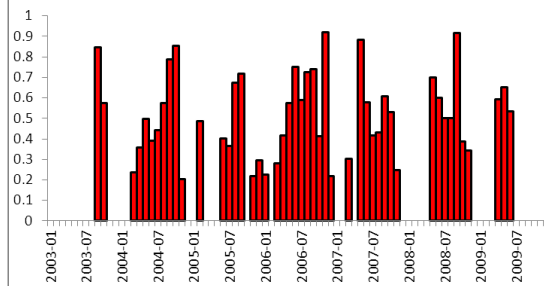
Maldives

so₂

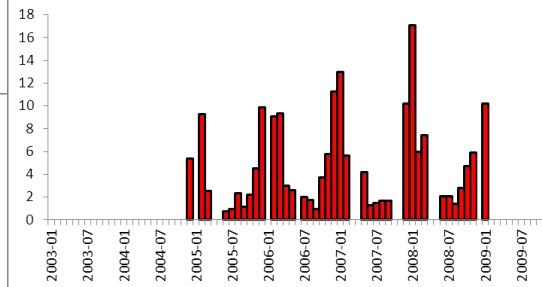


Sri Lanka

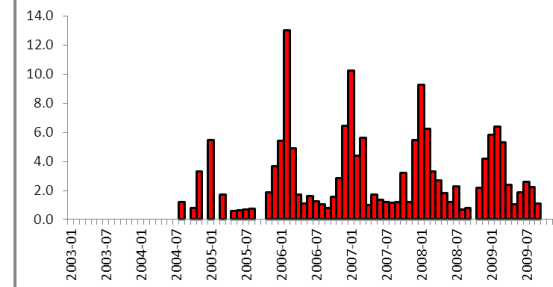
so₂



so₂



so₂



India

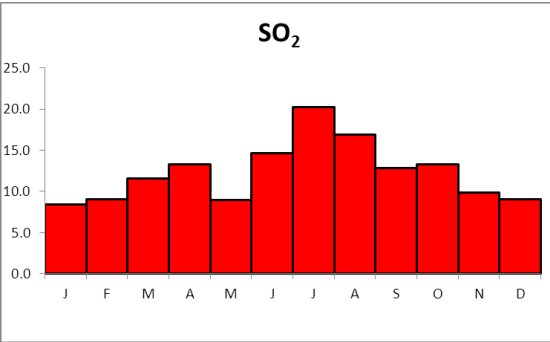
Bangladesh

SO₂ µg/m³

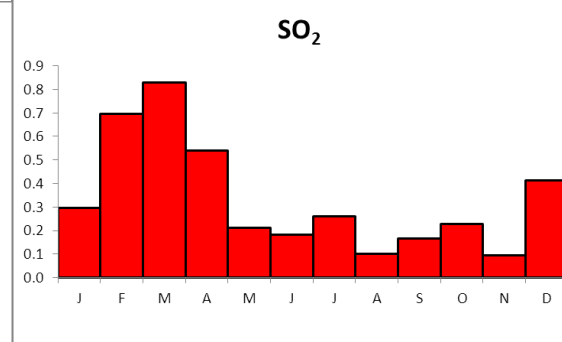
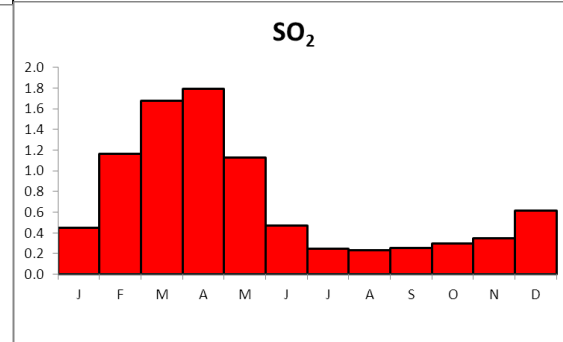
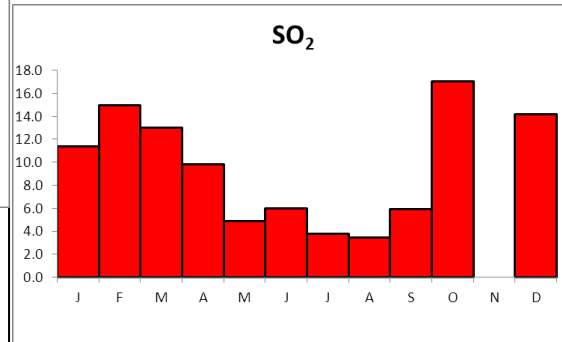
Pakistan

Nepal

Bhutan

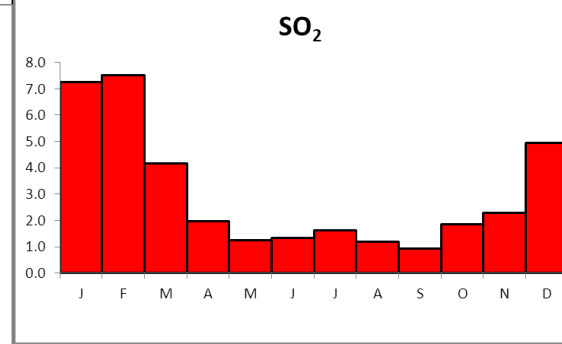
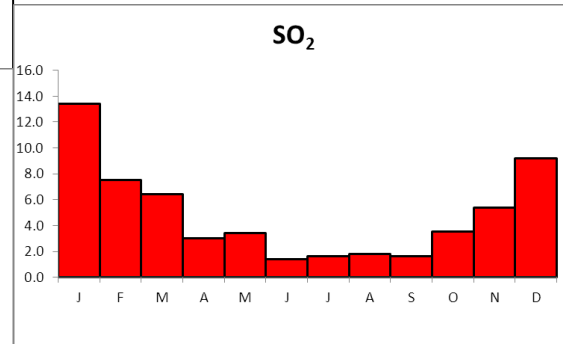
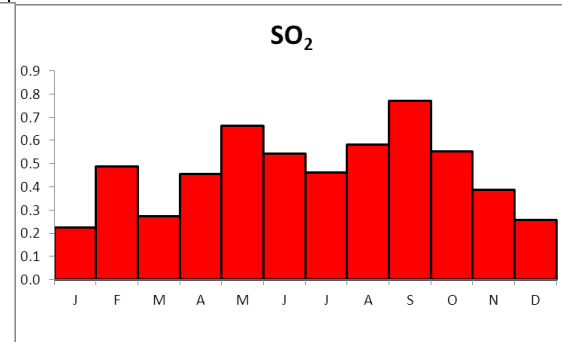
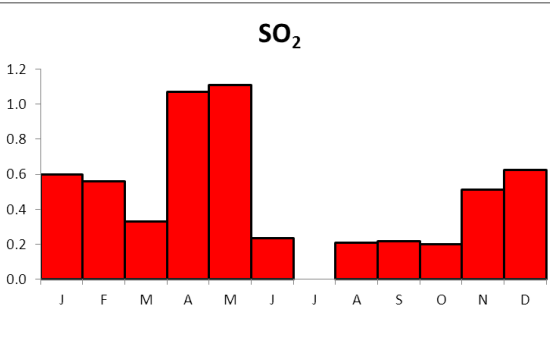


Iran



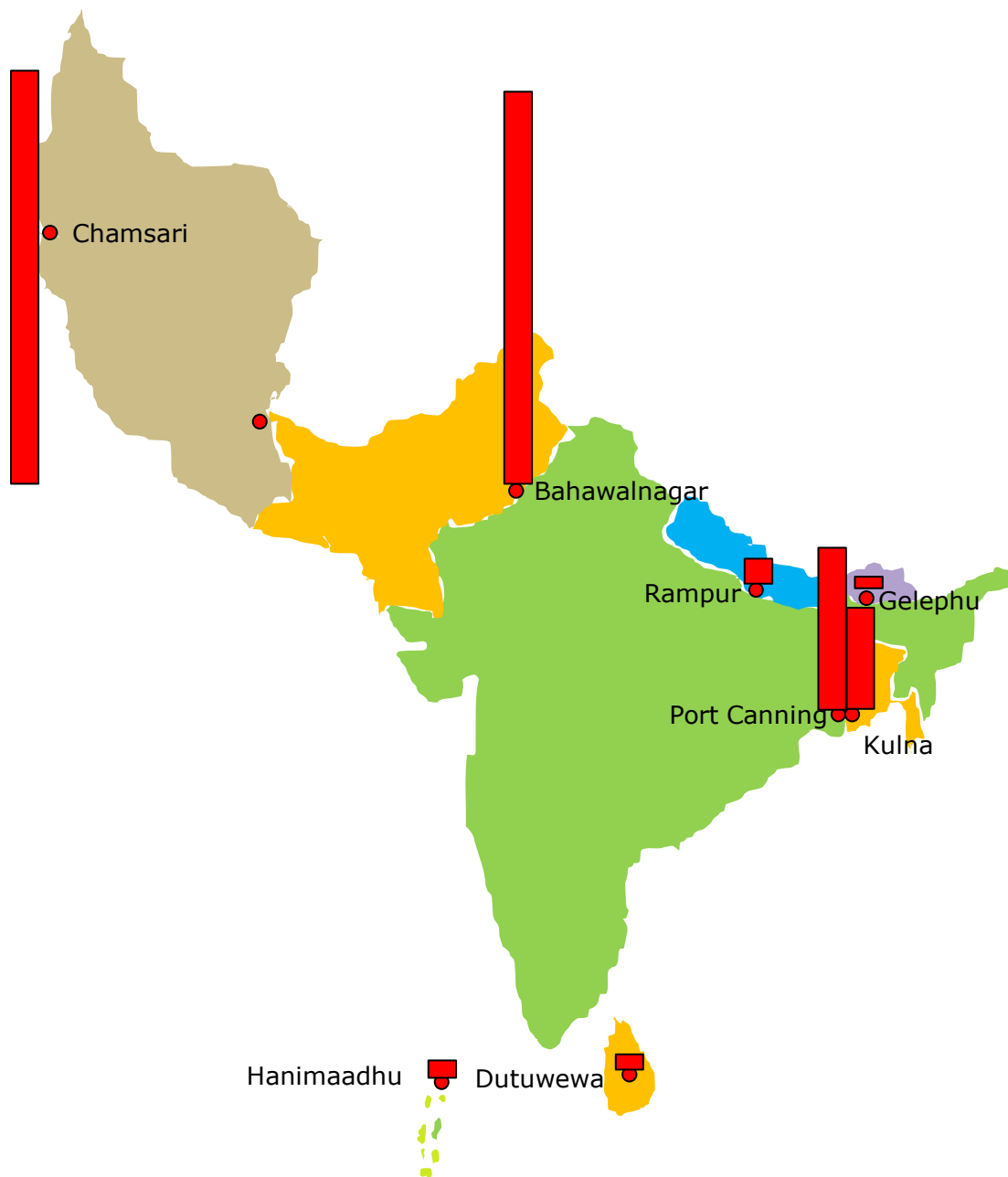
Maldives

Sri Lanka



India

Bangladesh

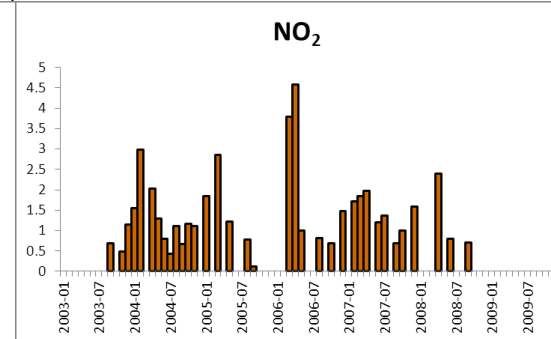
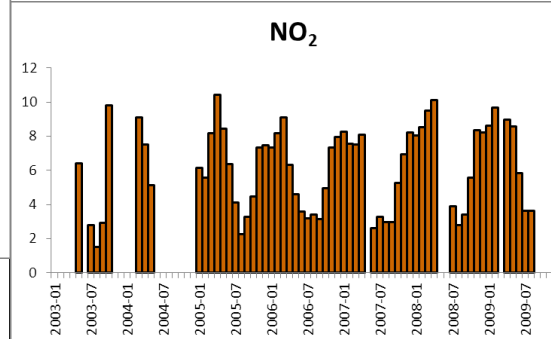
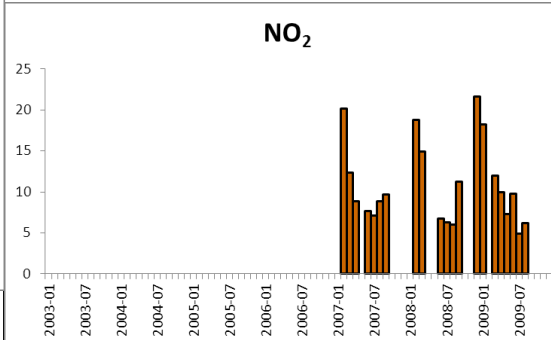
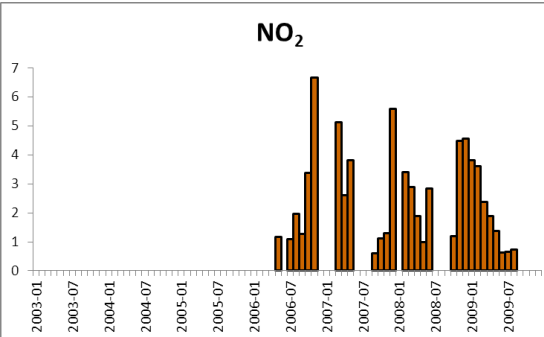


NO₂ µg/m³

Pakistan

Nepal

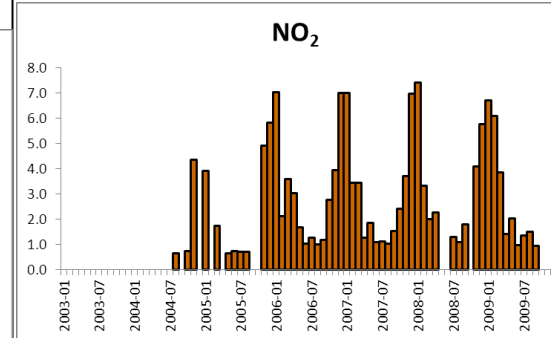
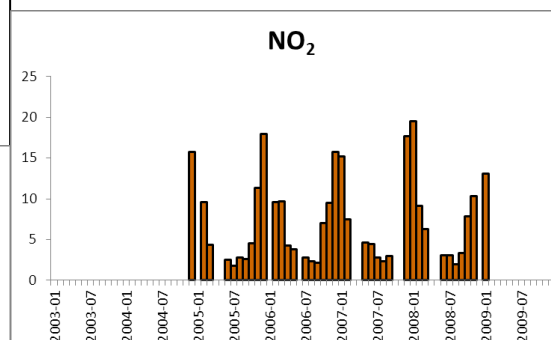
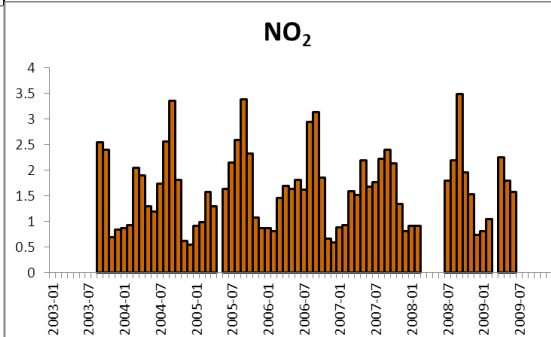
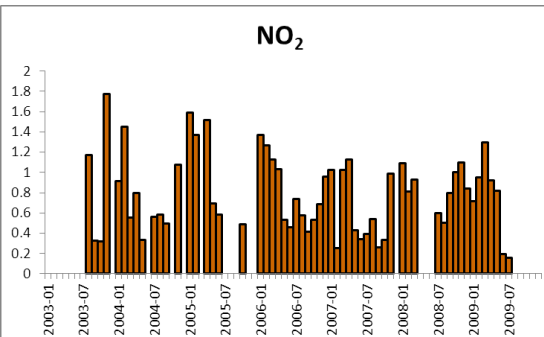
Bhutan



Iran

Maldives

Sri Lanka



India

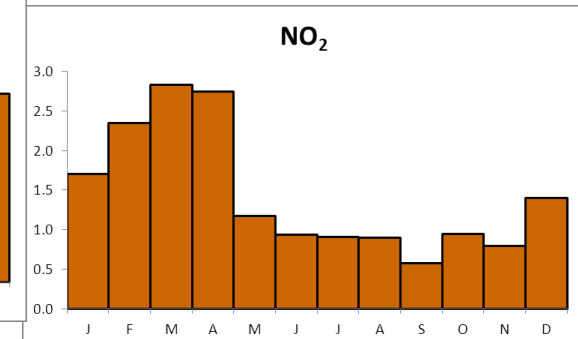
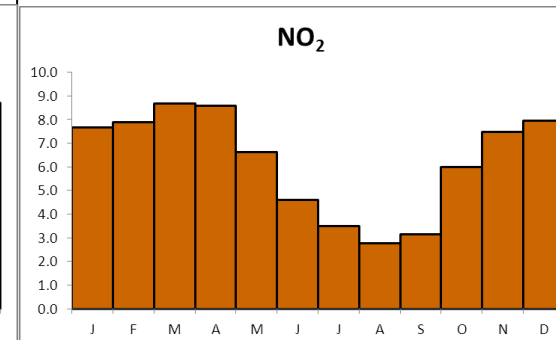
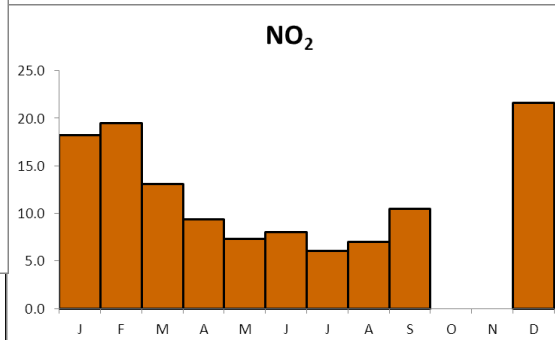
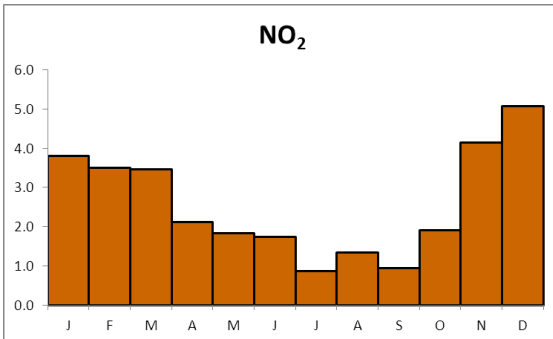
Bangladesh

NO₂ µg/m³

Pakistan

Nepal

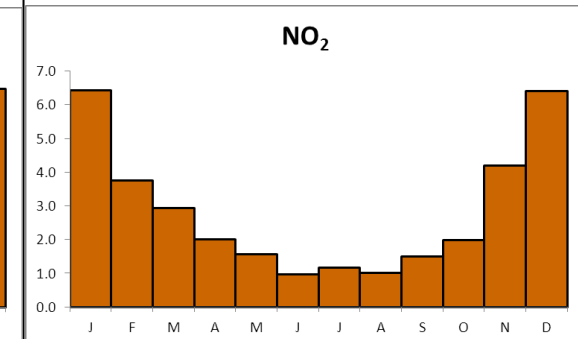
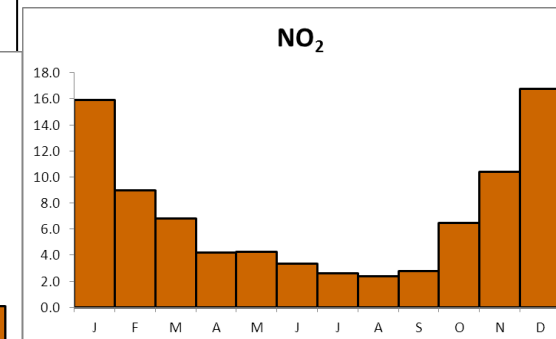
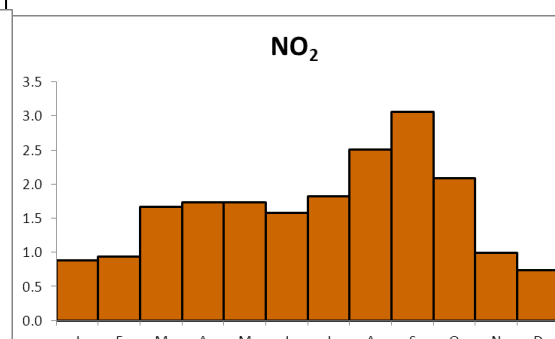
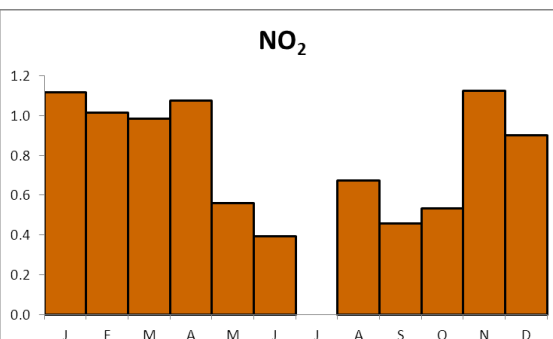
Bhutan



Iran

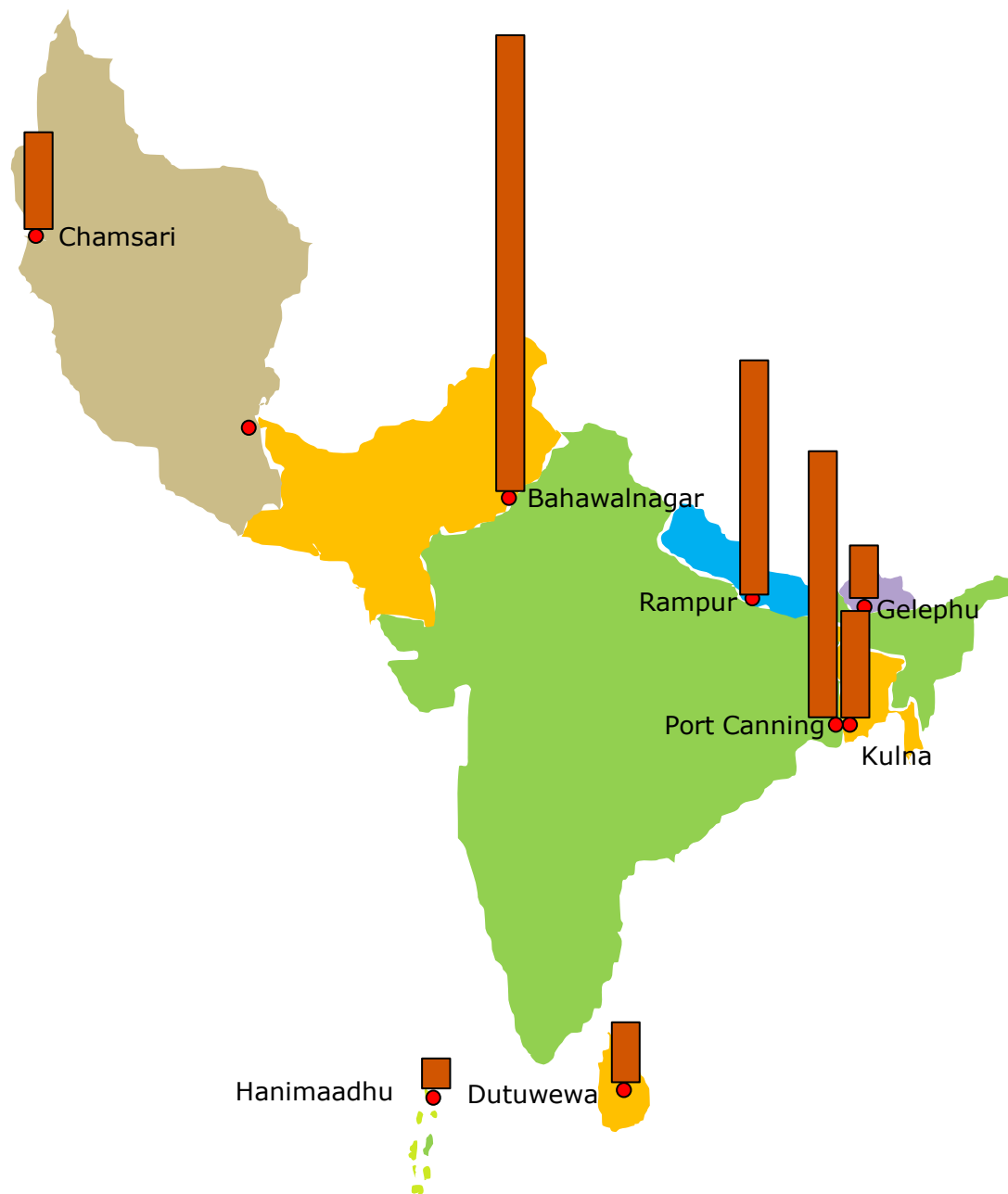
Maldives

Sri Lanka



India

Bangladesh



Thank you!